

## INSTALLATION INSTRUCTIONS

DESCRIPTION: Cab Rear Window  
 PART NUMBER: BAN-K750A-V0  
 MODEL: 2021+ Wolverine X2



### ⚠ WARNING

Please read and understand these instructions completely before installation to avoid possible injury, or damage to the accessory or vehicle.

### NOTICE:

Installation of this kit requires a torque wrench. This installation should be performed by an authorized Yamaha dealer or a qualified mechanic.

### WARRANTY INFORMATION:

In the United States, see your Yamaha dealer for a copy of the Yamaha Genuine Parts and Accessories Limited Warranty.

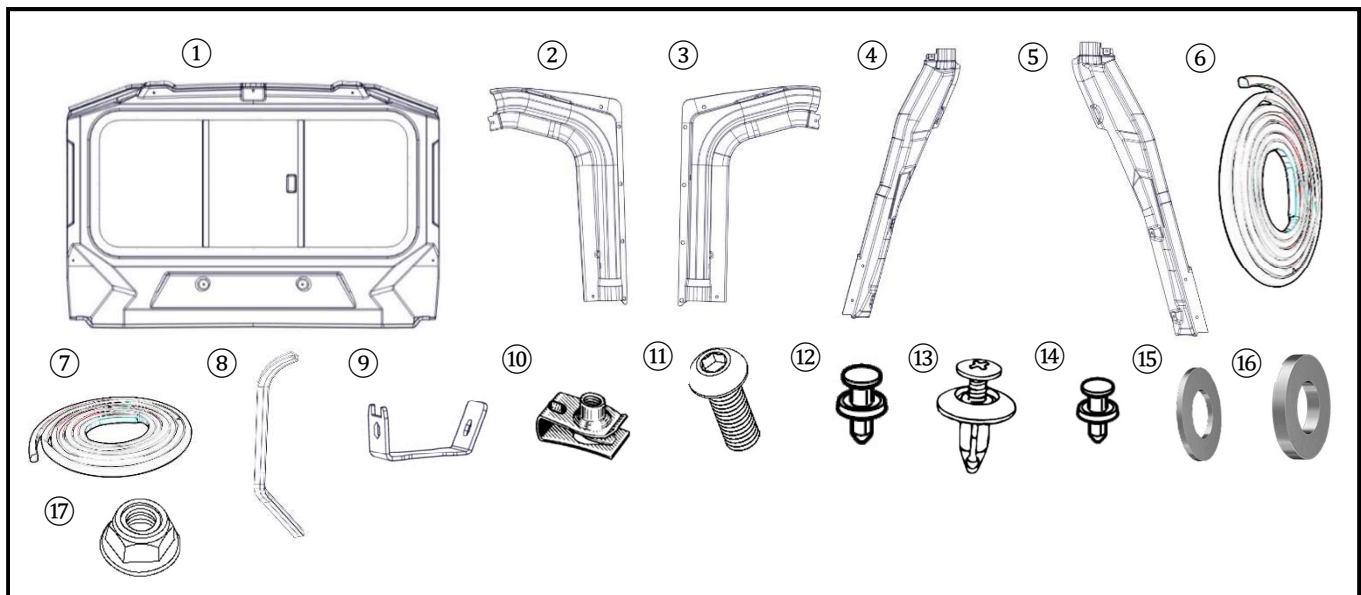
### DEALER OR INSTALLER:

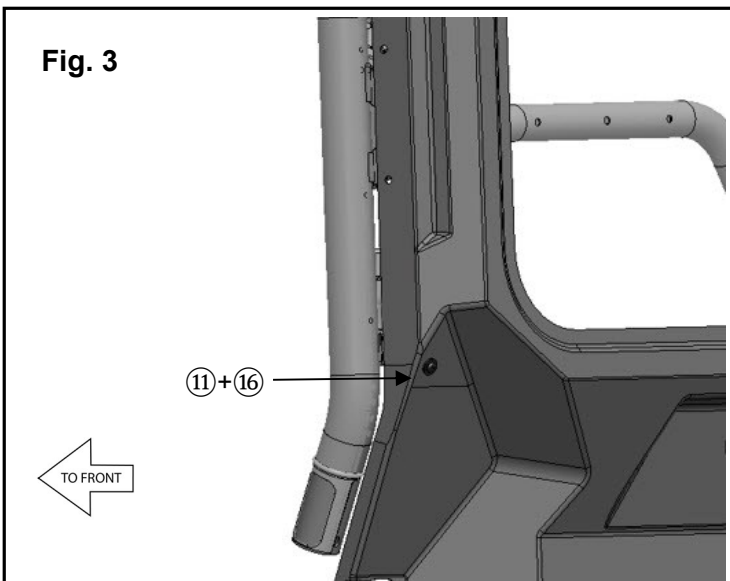
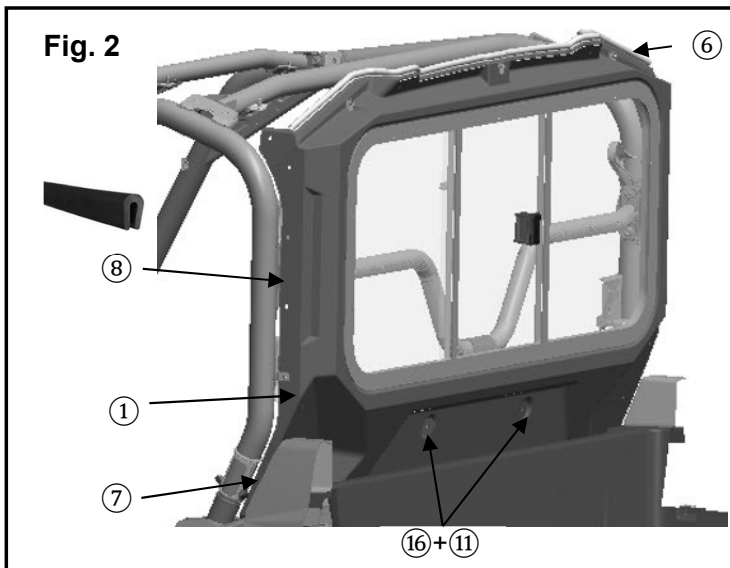
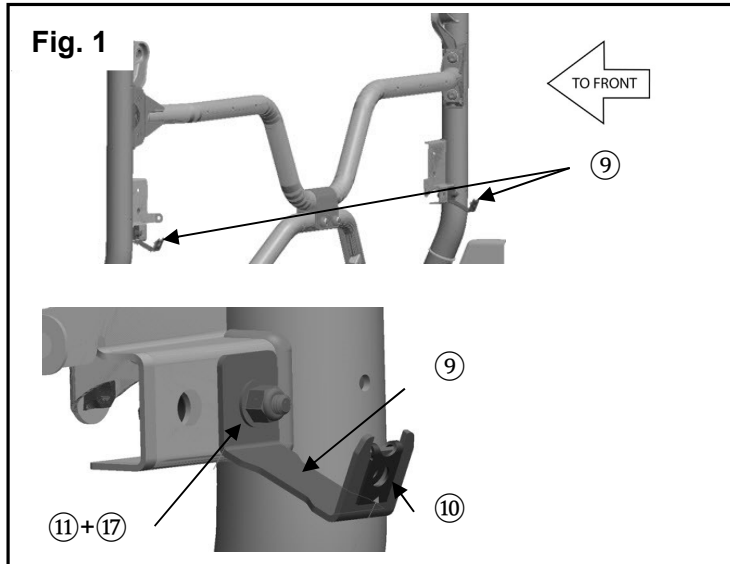
These instructions contain important information for future reference and *must* be given to the customer.

### PARTS LIST:

No.	Part Number	Description	Qty
--	<b>BAN-K750A-V0</b>	Cab Rear Window Kit	--
①	*	Rear Window	1
②	*	Upper Left Side Jamb	1
③	*	Upper Right Side Jamb	1
④	*	Lower Left Side Jamb	1
⑤	*	Lower Right Side Jamb	1
--	<b>B4M-K8544-V0</b>	Replacement Glass Assembly	--
⑥		Upper Seal	1
⑦	<b>B4M-F5803-V0</b>	Lower Seal	1
⑧		Bulb Seal 28"	2
⑨		Rear Brackets	2
⑩		Spring Nuts	11
⑪		M6x20 Button Head Screws	15
⑫		8mm Rivet	10
⑬	<b>BAN-K754D-T0</b>	5mm Screw Rivet	6
⑭		6mm Rivet	4
⑮		18mm Washer	13
⑯		25mm Washer	2
⑰		M6 Nylon Locking Flange Nut	2

\* Part supplied with kit only and not available separately.





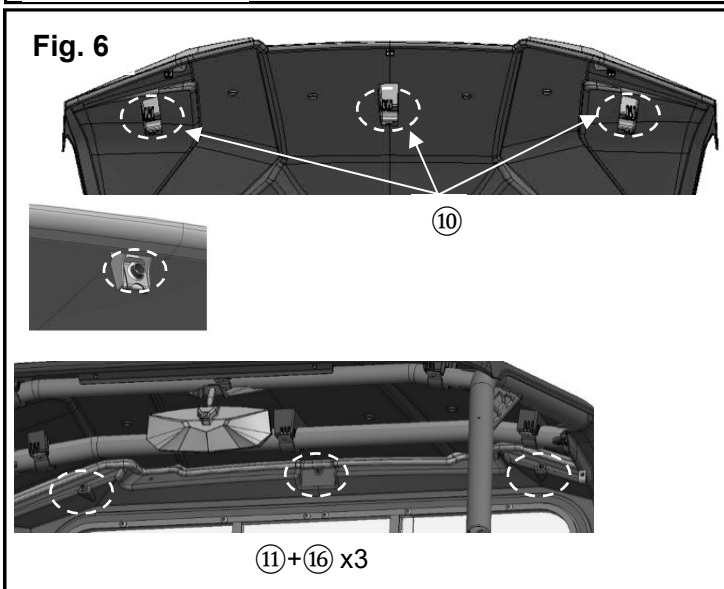
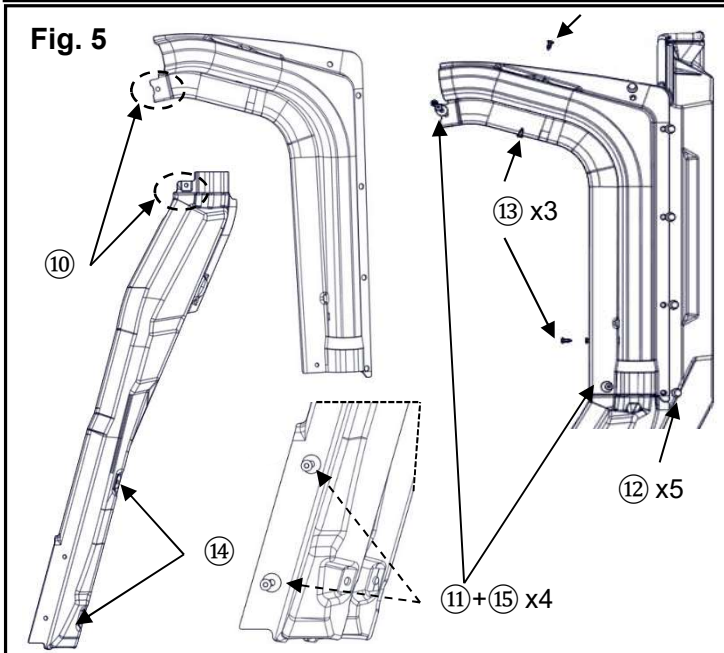
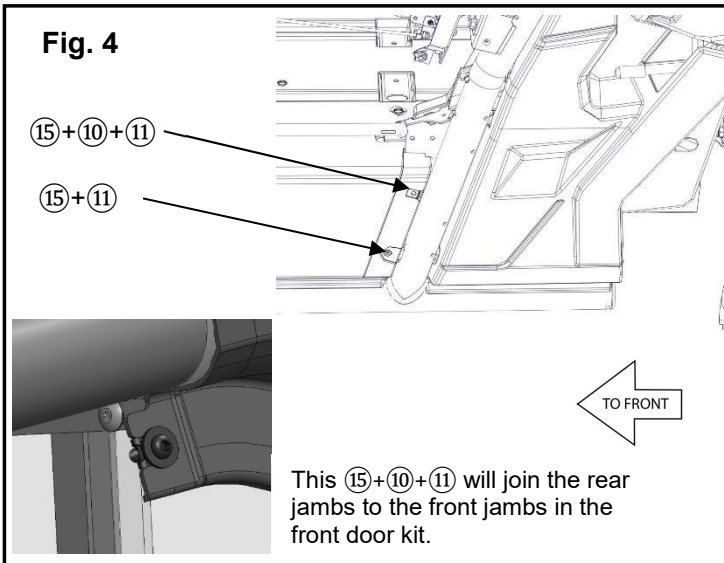
**Tip:** This kit requires the installation of three other kits. These kits are: **Sun Top** (p/n B4M-K84A0-V0), **Cab Enclosure Front Glass** (p/n B4J-F83J0-T0), and the **Cab Enclosure Doors** (p/n BAN-K85A0-V0) are optional unless the full cab is being installed.

**PREPARATION:**

- Place the vehicle on a secure and level surface.
- Set the parking brake.
- Clean the mounting surfaces before beginning installation.
- Recommend that an assistant help with installation.
- This kit is installed **before** the Suntop. (if equipped)
- This kit is installed **before** the Cab Enclosure Doors. (see next page if installing with the cab enclosure doors)

**INSTALLATION: Soft Sides and Stock Doors**

1. Loosen all the clamps on the Sun Top and retain the hardware, if installed.
2. Insert three (10) Spring Nuts in the mounting locations along the rear of the Sun Top. The threaded portion of the spring nut faces the rear of the vehicle. (Fig. 6)
3. Install the (9) Rear Brackets to the ROPS using one (11) M6x20 Button Head Screw and one (17) M6 Flanged Nylon Locking Nut. Leave loose until final adjustment. (Fig. 1)
4. Attach one (10) Spring Nut to each (9) Rear Bracket. (Fig. 1)
5. Install the (8) Bulb Seal along the forward facing edges on the side of the (1) Sliding Window that follow the B Pillar of the ROPS. (Fig. 2)
6. Verify the (6) Upper and (7) Lower seals on the (1) Sliding Window are aligned and firmly attached. (Fig. 2)
7. Place the (1) Rear Window into the vehicle and align the lower edge with the channel in the rear body panel. (Fig. 2)
8. Place one (16)  $\varnothing$ 25mm Washer each on two (11) M6x20 Button Head Screws. Thread the (11) M6x20 Button Head Screws into the ROPS. (Fig. 2)
9. Thread one (11) M6x20 Button Head Screw with one (15)  $\varnothing$ 18 mm Washer through the panel and into the (11) Spring Nut on the (10) Bracket. Repeat on the other side. (Fig. 3)
10. Reinstall the Sun Top to the ROPS and thread in three (11) M6x20 Button Head Screws with three (15)  $\varnothing$ 18mm Washers through the panel and into the spring nuts mounted to the sun top. (Fig. 6)
11. Torque the Sun Top fasteners to 3Nm (0.3 m-kg or 26 in-lbs.)
12. Torque all remaining hardware to 7 Nm (0.7 m-kg or 5.1 lb-ft)



**INSTALLATION: Cab Enclosure**

1. Follow the procedure above and install the (1) Rear Window. Note: Step 5 will be omitted because those (8) seals will not be used.
2. Insert one (10) Spring Nut on the (4) and (5) Lower Jamb Panels and one (10) Spring Nut on the body panel under the seat for the upper mount hole. (Fig. 4 and 5)
3. Align and install the (4) Left Side Lower Jamb to the ROPS. Thread in two (11) M6x20 Button Head Screws with one (15) ø18mm Washer on each bolt in the lower mounting holes. Insert two (14) 6mm Rivets through the body panel and into the ROPS. Torque to 3Nm (0.3 m-kg or 2.21 ft-lb) (Fig. 4 and 5)
4. Place the (2) Left Side Upper Jamb on the ROPS and over the top edge of (4) Left Side Lower Jamb.
5. Thread in one (11) M6x20 Button Head Screw with one (15) ø18mm Washer into the (10) Spring Nut on the bottom of (2) and (3) Upper Side Jambs. Then thread in one (11) M6x20 Button Head Screw with one (15) ø18mm Washer into the lower mounting holes for the (4)+(5) Lower Side Jambs. Torque to 3 Nm (0.3 m-kg or 2.2 lb-ft) (Fig. 4 and 5)
6. Insert five (12) 8mm Rivets along the rear edge of the (2) Left Side Upper Jamb and join it to the (1) Rear Window. (Fig. 5)
7. Insert three (13) 5mm Screw Rivets through the (2) Left Side Upper Jamb and into the ROPS. (Fig. 5)
8. Repeat Steps 3 through 7 for (3) Right Side Upper Jamb and (5) Right Side Lower Jamb. (Fig. 5)
9. Thread in one (11) M6x20 Button Head Screw with one (15) ø18mm Washer into the front of the (2) and (3) Upper Jambs to join this kit to the Door Enclosure Kit. Torque all remaining hardware to 3 Nm (0.3 m-kg or 2.2 lb-ft). (Fig. 4 inset)

**MAINTENANCE:**

Periodically, check torque on all hardware. If loose hardware is found, re-torque to specification.

**CARE AND CLEANING:**

Clean painted metal parts with a clean soft cloth and mild soap and water solution. Rinse and dry.

**CUSTOMER SERVICE:**

For further information see your Yamaha dealer.

**ESTIMATED TIME TO INSTALL: 2.0 HRS.**